



PUTTY

Vinyl polysiloxane addition cured silicone of high viscosity with a normal setting time for high precision impressions.

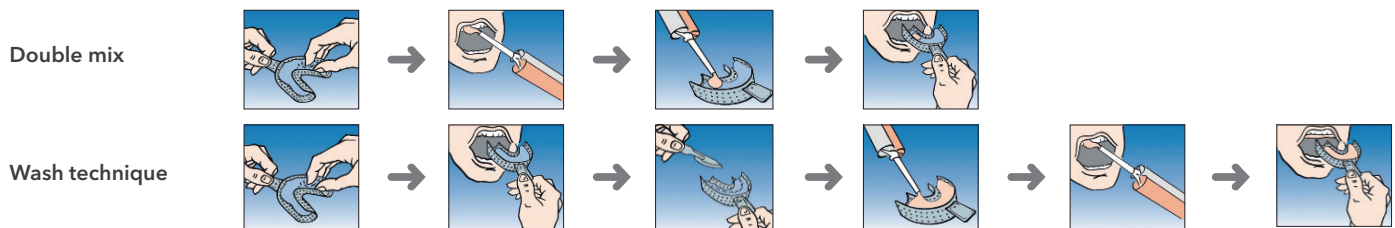


LIGHT

Vinyl polysiloxane addition cured silicone of low viscosity with a normal setting time for high precision impressions.

Application:

- For fixed and removable full or partial dentures.
- It is advisable to use the light with the putty.
- Double mix technique or wash technique.



Why choose Hydrosoft R&S?

- + Optimal mixing**
Soft and smooth mixing texture.
- + Ultra hydrocompatibility**
The silicone formulation combines perfectly with the water.
- + Excellent mechanical resistance**
Resistant to tearing and distortion when withdrawing and removing the impression model.
- + High elastic memory**
> 99% elastic memory which ensures a high precision reproduction of impression details.
- + Remarkable wettability**
Accurate reproduction of preparations, hard tissues and soft tissues.
- + Thixotropic**
The Light material does not overflow during the setting stage, which ensures easy use.



Advice from our professional dentists

- > I recommend this product for all your precision impressions.
- > The pleasant flavour of the product is a comfort for patients with strong gag reflexes.

Technical data and use



PUTTY NORMAL SET



LIGHT NORMAL SET

Standard

Type

Shore A hardness

Linear retraction (%)

Reproduction of details (µm)
ISO Standard: 20

Compression set (%)
ISO Standard: 0.8 - 2.0

Elastic memory (%)
ISO Standard > 96.5

Flavour

Colour

Mixing ratio

Mixing time

Working time

+ Setting time in mouth

= Total setting time

Packaging

Shelf life (in years)

References

ISO 4823

Type 0 Putty Consistency

60-2

< -0.2

20

1-3

> 99

Wild strawberry



1 : 1

30 sec

2 min*.

3 min 30 sec*.

5 min 30 sec*.

Tub of 450ml base
+ 450ml catalyst

Type 3 Light Bodied Consistency

45-2

< -0.2

3-5

> 99.5



Automatic mixing

2 x 50ml self-mixing cartridges
+ 12 mixing tips

3

105-968

105-969

* Time observed at a temperature of 23°C. Higher temperatures reduce the time, lower temperatures increase the time.

Additional products

ACCESSORIES

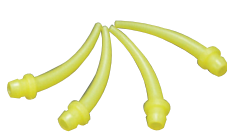
Dispenser gun



Mixing tips



Intra oral tips



IMPRESSIONS

Stainless steel or aluminium, perforated and non-perforated impression trays



Supratrays disposable sectoral impression trays



Hydrosoft, impression trays and tips: class I medical devices. CE marking. Images are for illustrative purposes only. Manufactured by CFPM.

GACD - 25 rue Bleue 75009 PARIS - France 435 051 776 R.C.S PARIS - SASU
Tel.: +33 (0)1 48 01 27 14 - Fax: +33 (0)1 45 23 51 89.
export@rs-dental-products.com - www.rs-dental-products.com.