



The choice of millions of dentists worldwide

# U600

Ultrasonic Scaler

Pleasant & Efficient



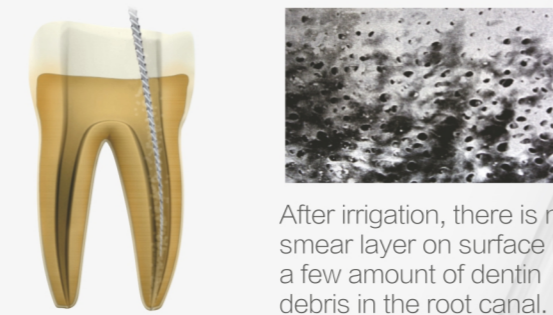
Intelligent power output  
Experience painless treatment

## U600 Ultrasonic Scaler

A global professional scaler manufacturer focuses on technological innovation for 30 years.

International high-tech enterprise  
**30** years innovation  
Woodpecker scaler owns **101** national patents  
**9** national invention patents

### Effective and thorough endodontic irrigation



After irrigation, there is no smear layer on surface but a few amount of dentin debris in the root canal.

Root canal irrigation is the most widely used clinical support methods. Its purpose is to remove the substance inside root canal, dissolve diseased tissue, remove pathogenic microorganisms, and remove smear layer. Lubricate the root canal internal wall. During root canal preparation process, prevent the infectious substance from being pushed to the deep part or out of the apical foramen, reducing the risk of instrument fracture in root canal.

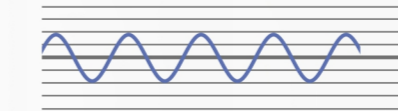
Compared with the traditional syringe irrigation, ultrasonic irrigation can better remove bacteria, dentin debris, and smear layer in root canal. And it can well clean special structures such as the lateral branch canal and root canal narrow area. Currently, ultrasonic irrigation is widely used in endodontic therapy in order to receive a better root canal preparation effect.



### Sine wave drive

Avoid instantaneous stimulation caused by power surge, ensuring comfortable treatment.

U600 Mild power output

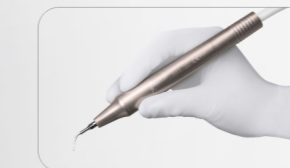


Rectangular power out of other brand scaler



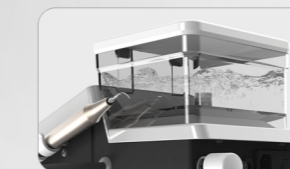
### High-quality handpiece

Aluminum shell can be autoclaved, not easy to cause cracking or deformation. Latest handpiece sealing technique enables long durability. User-friendly design brings better hand feeling.



### Automatic water supply system

Easy to change water, eliminating redundant steps and increasing the working efficiency. Solutions such as hydrogen peroxide, sodium hypochlorite, and chlorhexidine can be used. Clear 50ml scale mark makes it convenient to formulate solutions.



#### > High configuration

G4	G12	P1	P3	P8	E60	E62
x2	x2	x2	x2	x2	x2	x2

#### Standard configuration

G4	G12	P1	P3	P8	E60	E62
x1	x1	x1	x1	x1	x1	x1

Note: Woodpecker reserves the right of modifying the tip configuration without further notice.

### Supragingival scaling



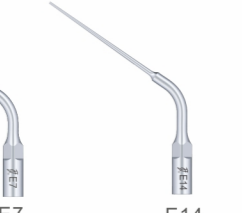
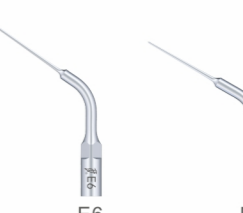
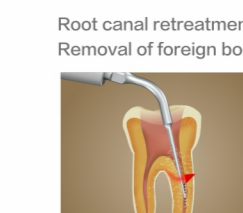
### Implant maintenance



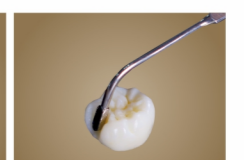
### Subgingival scaling



### Root canal treatment



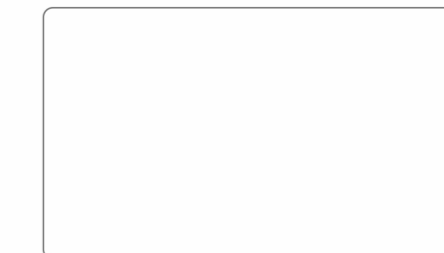
### Cavity preparation



### GUILIN WOODPECKER MEDICAL INSTRUMENT CO., LTD.

Registration Add & Manufactory Add:  
Information Industrial Park, Guilin National High-Tech  
Information Park 541004 Guilin, Guangxi China  
Tel:  
Europe Sales Dept.: +86-773-5873196, +86-773-2125222  
North America, South America &  
Oceania Sales Dept.: +86-773-5873198, +86-773-2125123  
Asia & Africa Sales Dept.: +86-773-5855350, +86-773-2125896  
Fax: +86-773-5822450  
E-mail: woodpecker@glwoodpecker.com, sales@glwoodpecker.com  
Website: http://www.glwoodpecker.com  
ZMN/WI-10-099 V1.0

Distributor:



Scan and login website for more information

