

Intraoral X-Ray Unit

X-70 M

X-70 W

Technical Info



1023
Date: 23/01/2018
Language: English
Rev: 1/2018
Code: X70 AC Infotec

DESCRIPTION AND INTENDED USE

X-70, is an AC intraoral X-Ray unit used to obtain radiographs of the oral cavity that allow dentists to see inside a tooth and beneath the gums to assess the health of the bone and supporting tissues that hold teeth in place.

Images obtained with X-70 help dentists diagnose and treat common problems, such as cavities, gum disease and some types of infections. The use of X-70 involves exposing a part of the mouth to a small dose of ionizing radiation.

X-70 allows using normal films or digital images receptors (intraoral sensor and phosphor plates).

X 70 is available in two versions, wall mounted (W) and mobile (M).

- Cod. RXAC70-60 X-Ray unit with 60cm extension arm, 220 V
- Cod. RXAC70-60-115 Ray unit with 60cm extension arm, 115 V
- Cod. RXAC70-80 Ray unit with 80cm extension arm, 220V
- Cod. RXAC70-80-115 Ray unit with 80cm extension arm, 115 V
- Cod. RXAC 70-M-115 mobile version, 115V
- Cod. RXAC 70-M mobile version, 220V

Key Features

- Micro-process controller functions
- Exposure time, range from 0.06-2.0s
- Manually selection of exposure time, range from 0.06-2.0s, with 0.02s step.
- Automatic digital selection between Child (small) and Adult (big)
- Low dose setting during digital sensor use
- Remote control with 3-meter spiral telephone cable.
- Optional remote X-RAY control from outside the room.

GENERAL CHARACTERISTICS

Unit name	X-70 W X-70 M
Manufacturing Address	Via Artigiani 4, Castenedolo, 25014 (BS) Italy
Classification according to Directive EC 93/42	Medical Unit Class II b
Applicable Standards	EN 60601-1:2005 EN 60601-1-2:2007 IEC 60601-2-65:2012
CND Classification	Z1 103040101
GMDN Nomenclature	42297

X-RAY GENERATOR

Operation Mode	Continued with cooling period
Voltage	AC 230V/115 ±10%
Frequency	50/60 Hz
Electric current	4 A @ 230 V / 8 A @ 115V
Max power consumption	920 VA
Fuse	6.3/12 A

X-RAY TUBE

Focal Spot	0.7 IEC 60336:2005
Tube voltage	70KV±10%
Anodic electric current	7mA±15%
Anodic angle	19°
Total filtration	≥2.1mmAl
Anode material	Tungsten
Duty Cycle	1/60
Half-value layer	70KV, about 1.6mmAl eq
Leakage radiation	1m<0.007mGy/h
Connection	Coaxial plug

COLLIMATOR

Distance from focus to skin	22cm (8 5/8 inch)
Output radiation	Diameter: Φ6cm (2 3/8 inch)

TIMER

<p>Micro-process controller function Children (small), adult (big), automatic digital selection Low dose setting using digital sensor Manual switch with 3 meter spring cable The remote push button control can be installed apart from the X-Ray unit</p>	
Set exposure time	(0.06s-2.0s) automatically by selecting objects
Manually set exposure time	range from 0.06-2.0s

ENVIRONMENTAL CONDITIONS

Max operative temperature	+ 10° to + 40°
Operative humidity level	Max 80%
Operative atmospheric pressure	80 to 106 Pa (Max height ≤ 2000mlm)
Temperature range for transporting and storing	- 20° to + 70°
Max humidity level for transporting and storing	< 95%
Atmospheric pressure for transporting and storing	70 to 106 Pa

WEIGHTS

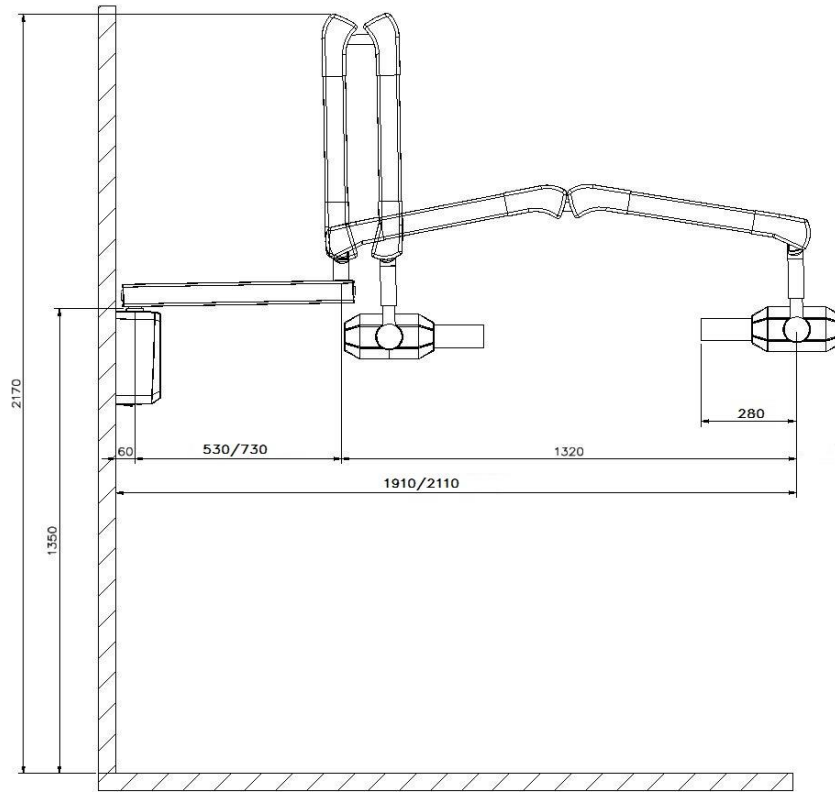
Timer and control	3.0 kg
Generator	7.5 kg
Support arm 60 cm	3.2 kg
Support arm 80 cm	4.0 kg
Scissor arm	11.5 kg
Mobile stand base	12.6 kg
Mobile stand column	5.1 kg
Support and wheels	2.0 kg
Carton and accessories	5 kg

PACKAGING

Product	Weight (Kg)	Box Size (cm)
X-70 W 60 cm arm	30.2	38 x 90 x 36
X-70 W 80 cm arm	31	38 x 90 x 36
X-70 M	49	38 x 108 x 36

DIMENSION

Wall Mounted Version



Mobile Version

