

MY  
ITENA  
CHOICE  
#obturation

# OBTURYS

HANDMIX OR AUTOMIX

Permanent resin obturation cement



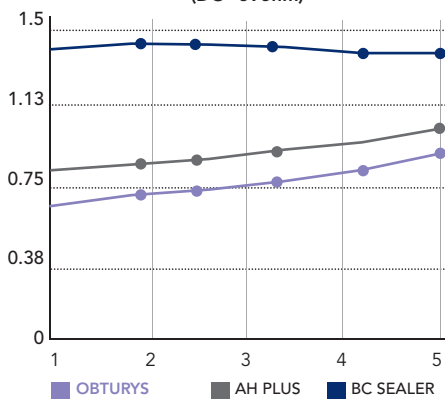
- Reworked density for **excellent consistency**
- Fits perfectly to the walls for an **excellent seal**
- **Easy removal of excess**
- **Easier re-operations** because the material is less dense but just as resistant
- **Excellent user comfort**



Setting time:  
**between 18  
and 24 hours**

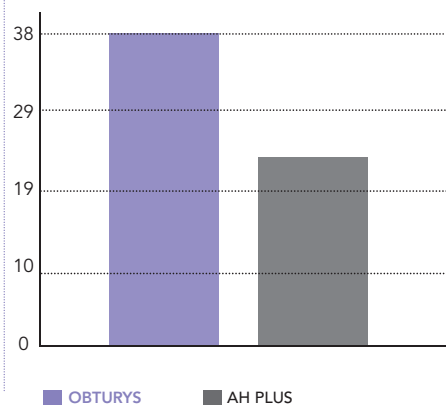
## BACTERIOSTATIC

Bacteriostatic action of OBTURYS up to 6 months compared to other products (DO=595nm)

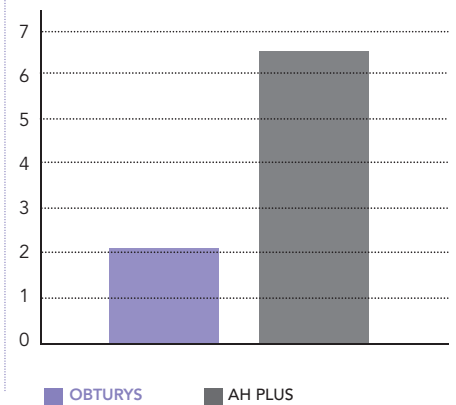


## FLOWABILITY

Flowability (mm)



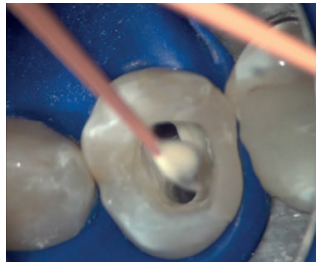
## DIMENSIONAL CHANGE



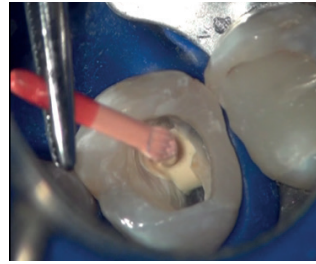
# PROTOCOL



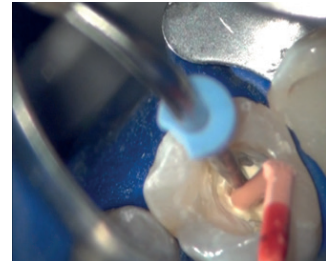
Initial radiography



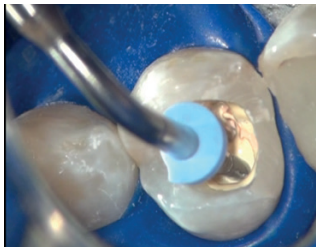
**1** Cover the apical third of the gutta percha point with Obturys.



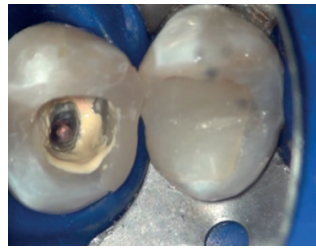
**2** Cover the inside of the root canal with Obturys using the gutta percha. Make vertical movements.



**3** Using the probe, cut the excessive gutta percha outside the canal.



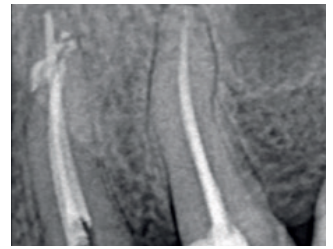
**4** Hot vertical condensation of the gutta percha.



**5** Obturation of the apical third.



**6** Filling two thirds of the coronal section with the hot gutta by injection.



**7** Final X-ray. Thorough inspection.

## References

### Handmix

1 handmix syringe 5ml + 1 manual adapter  
+ 10 mixing spatulas + 1 mixing pad ..... OBHM1-5

### Automix

1 automix syringe 5ml + 10 mixing tips + 10 intra-oral tips  
+ 1 mixing pad ..... OBAX1-5

