

Qual lima para qual caso?

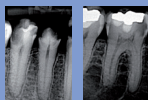
TRATAMENTO

ROTAÇÃO CONTÍNUA

MOVIMENTO ALTERNADO ANTI-HORÁRIO E HORÁRIO

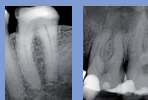
Casos padrão

canais retos e/ou bastante largos



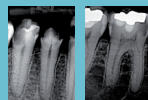
Casos difíceis

canais finos e/ou curvos



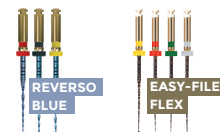
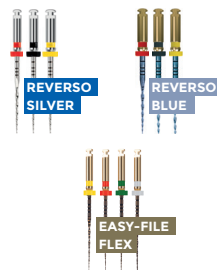
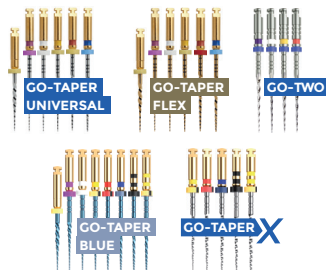
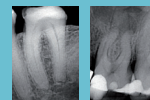
Casos padrão

canais retos e/ou bastante largos



Difficult cases

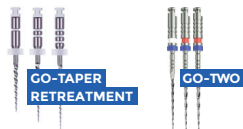
fine and/or curved canals



RETRATAMENTO

ROTAÇÃO CONTÍNUA

MOVIMENTO ALTERNADO ANTI-HORÁRIO E HORÁRIO



Dispositivos médicos de classe IIa.

GO-TAPER FLEX -
Marcação CE 0197. Organismo notificado TÜV
Rheinland. Representante autorizado europeu:
SUNGO Europe B.B. Olympisch Stadion 24, 10760E
Amsterdam, NETHERLANDS.

GO-TAPER UNIVERSAL, GO-TWO, GO-TAPER
RETREATMENT, REVERSO SILVER, REVERSO BLUE,
EASY-FILE FLEX, GO-TAPER BLUE, GO-TAPER X.
Marcação CE 0197. Organismo notificado TÜV
Rheinland. Representante autorizado europeu:
Wellking Ltd, Suite 8, 29 Harley Street London, W1G
9QR, England, UNITED KINGDOM.