

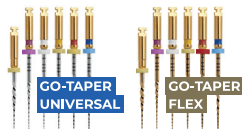
Quelle lime pour quel cas ?

TRAITEMENT

ROTATION CONTINUE

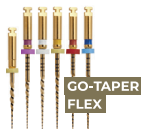
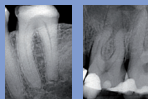
Cas standards

canaux droits et/ou assez larges



Cas difficiles

canaux fins et/ou courbés



MOUVEMENT ALTERNÉ ANTI-HORAIRE & HORAIRE

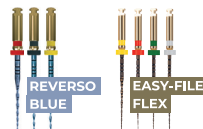
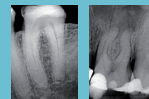
Cas standards

canaux droits et/ou assez larges



Cas difficiles

canaux fins et/ou courbés



RETRAITEMENT

ROTATION CONTINUE



GO-TAPER
RETREATMENT

MOUVEMENT ALTERNÉ ANTI-HORAIRE & HORAIRE



REVERSO
SILVER

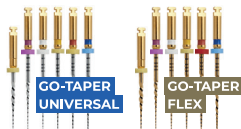
Which file for which case?

TREATMENT

CONTINUOUS ROTATION

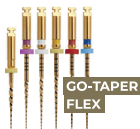
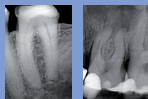
Standard cases

straight and/or fairly wide canals



Difficult cases

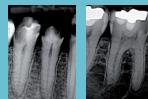
fine and/or curved canals



ALTERNATING ANTI-CLOCKWISE AND CLOCKWISE MOVEMENT

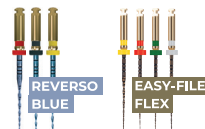
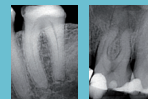
Standard cases

straight and/or fairly wide canals



Difficult cases

fine and/or curved canals



RETREATMENT

CONTINUOUS ROTATION



GO-TAPER
RETREATMENT

ALTERNATING ANTI-CLOCKWISE AND CLOCKWISE MOVEMENT



REVERSO
SILVER

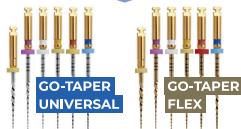
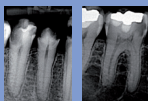
¿Qué lima para cada caso?

TRATAMIENTO

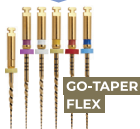
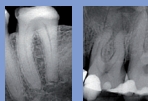


MOVIMIENTO CONTINUO

Casos estándar
canales rectos y/o
suficientemente anchos

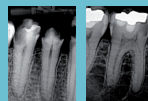


Casos difíciles
canales finos y/o curvos

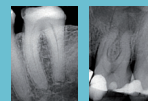


MOVIMIENTO ALTERNO ANTIHORARIO Y HORARIO

Casos estándar
canales rectos y/o
suficientemente anchos



Casos difíciles
canales finos y/o curvos



RETRATAMIENTO



MOVIMIENTO CONTINUO



**GO-TAPER
RETREATMENT**



MOVIMIENTO ALTERNO ANTIHORARIO Y HORARIO



**REVERSO
SILVER**

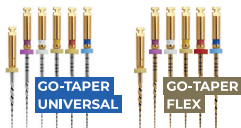
Qual lima para qual caso?

TRATAMENTO

ROTAÇÃO CONTÍNUA

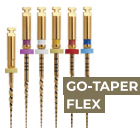
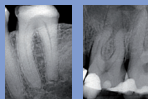
Casos padrão

canais retos e/ou bastante largos



Casos difíceis

canais finos e/ou curvos



MOVIMENTO ALTERNADO ANTI-HORÁRIO E HORÁRIO

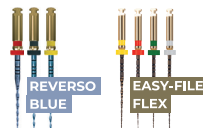
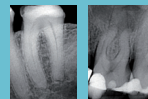
Casos padrão

canais retos e/ou bastante largos



Casos difíceis

canais finos e/ou curvos



RETRATAMENTO

ROTAÇÃO CONTÍNUA



GO-TAPER
RETREATMENT

MOVIMENTO ALTERNADO ANTI-HORÁRIO E HORÁRIO



REVERSO
SILVER

Quale file per quale caso?

TRATTAMENTO



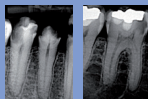
ROTAZIONE CONTINUA



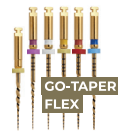
MOVIMENTO ALTERNATO
ORARIO E ANTI-ORARIO

Casi standard

canali dritti e/o abbastanza larghi



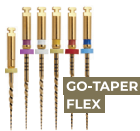
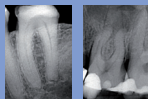
GO-TAPER
UNIVERSAL



GO-TAPER
FLEX

Casi difficili

canali fini e/o curvi



GO-TAPER
FLEX

Casi standard

canali dritti e/o abbastanza larghi



REVERSO
SILVER



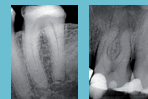
REVERSO
BLUE



EASY-FILE
FLEX

Casi difficili

canali fini e/o curvi



REVERSO
BLUE



EASY-FILE
FLEX

RITRATTAMENTO



ROTAZIONE CONTINUA



MOVIMENTO ALTERNATO
ORARIO E ANTI-ORARIO



GO-TAPER
RETREATMENT



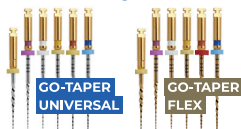
REVERSO
SILVER

Welke vijl in welk geval ?

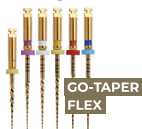
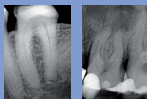
BEHANDELING

CONSTANTE ROTATIE

Standaard gevallen
rechte en/of vrij breed kanalen



Moelijke gevallen
fijne en/of gebogen kanalen

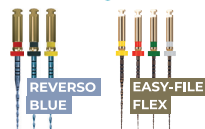
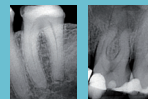


AFWISSELENDE BEWEGING TEGEN DE KLOK IN EN MET DE KLOK

Standaard gevallen
rechte en/of vrij breed kanalen



Moelijke gevallen
fijne en/of gebogen kanalen



HERVERWERKING

CONSTANTE ROTATIE



AFWISSELENDE BEWEGING TEGEN DE KLOK IN EN MET DE KLOK

