



PUTTY

Normal or fast setting soft viscosity hydrophilic vinyl polysiloxane silicone for first impressions.



MONOPHASE

Fast setting medium viscosity hydrophilic vinyl polysiloxane silicone.



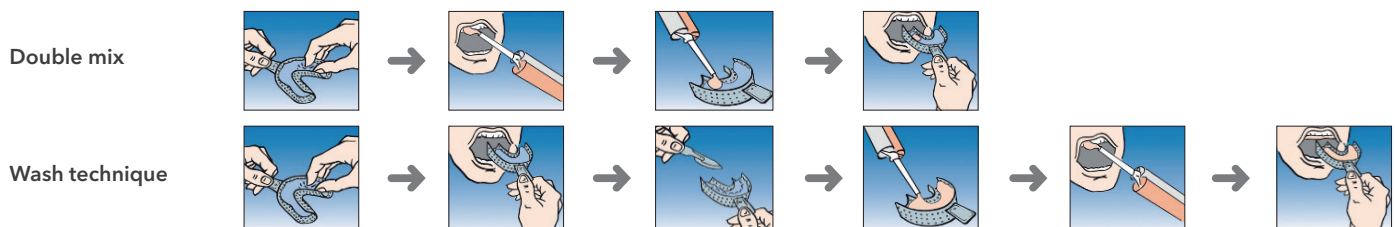
HEAVY

Fast setting high viscosity hydrophilic vinyl polysiloxane silicone.

**Compatible with the Turboflex light range.
Compatible with all machines on the market*.**

Application:

- For fixed and removable full or partial dentures.
- Putty Normal Set: Double mix technique or wash technique.
- Putty Fast Set and Monophase: Wash Technique.
- Heavy Fast: Double mix technique.



* Compatible with machines MixStar-eMotion (DMG), PowerMix: Kaniedenta (DMG), Sympress: Kettenbach (Renfert), Duomix II: Dentsply (Renfert), Modulmix: Zhermack (Zhermack), Dynamix speed: Heraeus Kulzer (Renfert), Sympress: Renfert (Renfert), Pentamix™ 3: 3M (3M).

Why choose R&S Turbomix?

- + Excellent dimensional stability**
Ensures the preservation of the impression.
- + High elastic memory**
≥ 99% elastic memory which ensures a high precision reproduction of impression details.
- + Hydrocompatible**
The Light ensures an exceptional reproduction of details even in contact with gingival fluid or blood.

- + Thixotropic**
The Light does not overflow during the setting stage, ensuring easy use.
- + "Snap Set" effect**
The ideal balance between working time and setting time: long working time, short setting time.



Advice from our professional dentists

- I recommend the Turbomix range for its fast and homogenous mixing which leads to a very precise material.

Technical data and use



PUTTY

MONOPHASE

HEAVY

Product

Standard

Type

Base Dose: Catalyst

Shore A hardness

Linear retraction (%)

Compression set (%) ISO Standard: 0.8 - 20

Elastic memory (%) ISO Standard > 96.5

Colour

Mixing time

Working time

Setting time in mouth

+ Total setting time

Packaging

Shelf life (in years)

References

Soft Normal Set

Soft Fast Set

Fast Set

Fast Set

ISO 4823

Type 0 Putty Consistency

Type 2 Medium Bodied Consistency

Type 1 Heavy Bodied Consistency

5:1

60-2

54-2

60-2

<-0.2

1-3

3-5

99

99.5

Automatic

2 min*.

1 min 30 sec*.

1 min 30 sec*.

1 min 30 sec*.

3 min 30 sec*.

2 min 30 sec*.

2 min 30 sec*.

2 min 30 sec*.

5 min 30 sec*.

4 min*.

4 min*.

4 min*.

Box of 2 x 380ml (317ml base + 63ml catalyst)

3

16-483

16-484

16-486

16-488

* Time observed at a temperature of 23°C. Higher temperatures reduce the time, lower temperatures increase the time.

Additional products

ACCESSORIES

Pack of 50 mixing tips
+ 2 clamping rings

Batch of 2 clamping rings



IMPRESSIONS

Stainless steel or aluminium, perforated
and non-perforated impression trays



Supratrays disposable
sectoral impression trays



Turbomix, impression trays and tips: class I medical devices. CE Marking. Images are for illustrative purposes only. Manufactured by CFPM.

GACD - 25 rue Bleue 75009 PARIS - France 435 051 776 R.C.S PARIS - SASU.
Tel.: +33 (0)1 48 01 27 14 - Fax: +33 (0)1 45 23 51 89.
export@rs-dental-products.com - www.rs-dental-products.com.

